

II. Store Management

Topic 29c

How to Dispose of Empty Agri- Input Packages

FACT SHEET

II. Store Management

Topic 29c: How to Dispose of Empty Agri-Input Packages

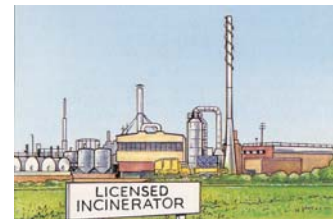
If empty agri-input packages are cleaned and destructed, they should be disposed of. **It is prohibited to throw the empty packages away on a waste dump with other waste.** Because of the risks for humans, animals, and the environment, there are **strict rules** on the disposal of empty agri-input containers.

The Food and Agriculture Organization of the United Nations (FAO) has developed a **set of rules** concerning disposal of empty agri-input packages. Most countries follow these rules, and sometimes they add their own regulations.

The rules given below are in line with FAO rules.

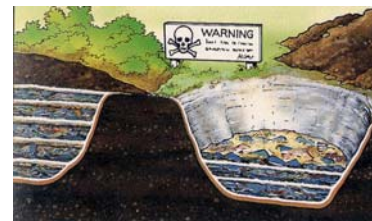
There are four ways to dispose of empty agri-input packages:

1. **Licensed incinerator:** This incinerator should not be confused with the on-farm incinerator. This incinerator is a huge machine that burns the empty packages completely using a very high temperature that can never be reached in an on-farm incinerator. Unfortunately only a few countries in Africa have these incinerators.



2. **Recycling:** Recycling does not mean cleaning and reusing the packages at the household level. When empty packages are recycled, they are thoroughly cleaned by huge machines and shredded into very small pieces. The pieces are mended together to make new materials, such as building materials. Unfortunately only a few countries in Africa have the proper equipment.

3. **Disposal pit:** Empty packages are buried in a disposal pit. More details on the disposal pit and how one can be constructed can be found in topic 27d.



4. **Return to importer:** Some importers collect empty packages after use and destroy them. When you buy your products from an importer or wholesaler ask if this service is offered.

For years, the **on-farm incinerator** was recommended by FAO and national governments. However, research showed that the temperatures in an on-farm incinerator do not rise high enough to burn all materials. In addition, the smoke that is released during the burning process is very toxic and dangerous for human health. Therefore, **the on-farm incinerator is no longer recommended.**



INSTRUCTIONS

II. Store Management

Topic 29c: How to Dispose of Empty Agri-Input Packages

Materials needed

- Flip-sheet board with flip-sheets
- Markers (1 black, 1 blue, 1 green, 1 red)
- Masking tape

Time needed: 30 minutes

Preparations:

- Flip-sheet with the heading *How to dispose of empty agri-input packages*
- The materials from the previous session (topic 27b)
- Flip-sheet with the heading *Disposal*
- Flip-sheet with the heading *Disposal recommended by FAO* and the text:
 - *Incinerator*
 - *Recycling*
 - *Disposal pit*
 - *Return to importer*

Set up

Attention: Show participants the empty bags, bottles, and boxes. Tell participants that you are a farmer and have many empty agri-input packages. You have cleaned and destructed them and now you want to dispose of them. Tell them that you want to put them on your bike and dump them at the communal waste dump at the border of the village. Would that be okay? Hopefully, everyone will say no.

Title: Tell participants the title while showing the flip-sheet with the title: *How to dispose of empty agri-input packages.*

Credibility: Explain your experience with agri-inputs.

- Objectives:** To explain how to dispose of empty containers, bags, and boxes.
- Benefits:** Proper disposal will prevent damage to the environment and contamination of people and animals.
- Direction:** During this session, we will discuss four ways to dispose of empty agri-input packages, and we will mention one method that used to be recommended, but cannot be used anymore.

Delivery

Explanation, Demonstration, Exercise, and Guidance:

1. Tell participants that they have told you that you cannot dump your empty agri-input packages on the communal waste dump. Ask them **why not**. Because they will pollute the environment and form a danger for humans, animals, and the environment. Tell them that they have to **advise you** on how to dispose of these packages.
2. Form buzz groups of two to three participants per group. Ask each group to list **ways to dispose** of empty agri-input packages. They have to write the ideas in their notebooks. Give the groups some time to discuss.
3. Paste the flip-sheet with the heading *Disposal* on the wall, and **discuss** the results of the brainstorming session. Ask each group to give at least one answer. If the answer was already given, the group can say that they had the same answer as mentioned before. Write all answers on the flip-sheet. Every time a group gives an answer, ask them to **explain** it.
4. If all possibilities are listed, show the flip-sheet with the heading *Disposal recommended by FAO*. Make sure to mention the following:
 - **Licensed incinerator:** This incinerator should not be confused with the on-farm incinerator. This incinerator is a huge machine that burns the empty packages completely using a very high temperature that can never be reached in an on-farm incinerator. Unfortunately only a few countries in Africa have these incinerators.
 - **Recycling:** Recycling does not mean cleaning and reusing the packages at the household level. When empty packages are recycled, they are thoroughly cleaned by huge machines and shredded into very small pieces. The pieces are mended together to make new materials, such as building materials. Unfortunately only a few countries in Africa have the proper equipment.
 - **Disposal pit:** Empty packages are buried in a disposal pit. More details on the disposal pit and how one can be constructed can be found in topic 27d.
 - **Return to importer:** Some importers collect empty packages after use and destroy them. When you buy your products from an importer or wholesaler ask if this service is offered.
5. If a group mentions the on-farm incinerator, explain that for years the **on-farm incinerator** was recommended by the FAO and national governments. However, research showed that the temperatures in an on-farm incinerator do not rise high enough to burn all materials. In addition, the smoke that is released during the

burning process is very toxic and dangerous for human health. Therefore, **the on-farm incinerator is no longer recommended.**

6. Ask participants which methods are **practiced** in their countries. In most countries it will only be the disposal pit and returning the packages to the importer or wholesaler.

Finish

- Summary:** Give a summary of all methods of disposal. Repeat that the on-farm incinerator is no longer recommended.
- Questions:** Ask if anyone has a question or comment.
- Evaluation:** Ask them to mention the four methods of disposing of empty agri-input packages and explain what they are. Ask them what the best solution is.
- Next step:** In this session, we learned how to dispose of empty agri-input packages. In the next session, we will discuss in detail how to construct a disposal pit.

Distribute the **fact sheet** to all participants.